

**PRODUCT SPECIFICATIONS**

**Construction:**

- Die-Cast Gasketed Architectural Front Frame And Housing
- Nickel-Plated Stainless Steel Hardware
- Textured Architectural Bronze Powdercoat Finish
- Tempered Clear Flat Glass For Bottom Lens
- Oval Molded Tempered Clear Glass For Top Lens
- Mount Directly Over A 4" Recessed Outlet Box, Includes Easy-Hang Wall Mounting Bracket With Built-In Level

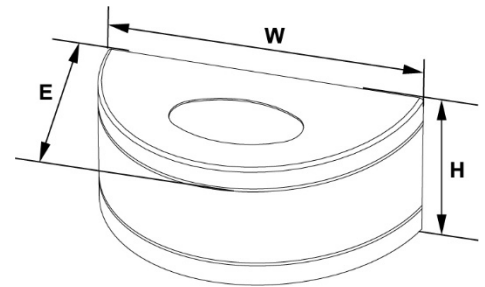
**Light Source:**

- LED 12 Watts Up And 34 Watts Down
- 4000°K Or 5000°K Color Temperature
- 120-277V
- Dimmable Driver

**Notes:**

- Listed For Wet Locations IP65
- Operating Temperatures: -40°C To +40°C

JOB NAME:	
TYPE:	



**Height:** 9 1/8"  
**Width:** 18 1/8"  
**Extension:** 7 1/8"

**Ordering Information**

Example: SL-WP-46LED-A-40K-BRZ

<b>SL-WP</b>	<b>46LED</b>	<b>A</b>		<b>120-277V</b>	<b>BRZ</b>	
--------------	--------------	----------	--	-----------------	------------	--

SERIES	WATTAGE	OPTICS	COLOR TEMP	VOLTAGE	FINISH	OPTIONS
--------	---------	--------	------------	---------	--------	---------

SL-WP	46LED- 12 Watts Up, 34 Watts Down LED	A-Type V	40K-4000K 50K-5000K	120-277V	BRZ- Bronze	EM- 90 Minute Emergency Battery Backup SF-Single Fuse DF-Double Fuse SP-Surge Protection
-------	---------------------------------------	----------	------------------------	----------	-------------	---

425 North Fox Street San Fernando, CA 91340  
(818) 365-8900 FAX (818) 365-2519  
www.southlandlighting.net

**SOUTHLAND**  
**L I G H T I N G**