

PRODUCT SPECIFICATIONS

Construction:

- Frosted Acrylic Lens
- White Finish
- Aluminum Construction

Light Source:

- 10 Watts LED 670 Lumens
- Triac Dimmable Or 0-10V Dimming Option
- 120V 3000°K 90 CRI

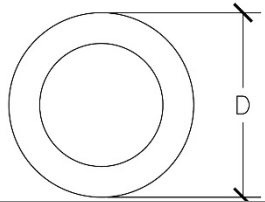
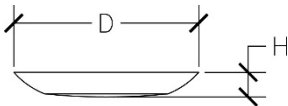
Notes:

- Wet Location Listed
- Mounts To Any 3" Or 4" Junction Box
- No Recessed Can Required
- Eliminates The Need For Prelim Drywall
- ETL Approved
- 50,000/Hr Life Expectancy
- DOB Technology Totally Flush With Ceiling
- California T24 JA8

JOB NAME:	
TYPE:	



Diameter: 6 1/4"
Height: 1 1/8"



Ordering Information

Example: *SL-LED2064-WH-J*

SL-LED2064	LED	6 1/4		WH	J
-------------------	------------	--------------	--	-----------	----------

SERIES	WATTAGE	DIAMETER	DIMMING	FINISH	TITLE 24
--------	---------	----------	---------	--------	----------

SL-LED2064	10W LED-670 Lumens	6 1/4"	D0- 0-10V Dimmable	WH-White	J-JA8
------------	--------------------	--------	--------------------	----------	-------



425 North Fox Street San Fernando, CA 91340
(818) 365-8900 FAX (818) 365-2519
www.southlandlighting.net

